

MERČER

HOUSE

UPTOWN DUBAI



Since 2014, we have approached every project with a deep understanding of the human experience. We believe our devotion to craft and exceptional detail is what makes our developments stand out among the UAE's expanding skyline in ways that few buildings can.

While others try to be the biggest, we focus on being the best.

We are a boutique property developer but, at heart, we are a family who designs for other families. We nurture elevated living from the ground up. Instead of following trends, we follow our instinct for what will satisfy our customers and their fundamental need to belong.

It's a philosophy we call 'Live by Design' a way of thinking that creates homes, spaces, and surroundings that are in complete synergy with your life.

The result is a portfolio of modern yet welcoming communities. Diverse living spaces that capture the true essence of home for every individual. Through our developments and connected initiatives, we continue to advocate for craft and design as a catalyst for growth within the Dubai art community.

THE BEATING

HEART OF

UPTOWN DUBAI

MERCER HOUSE

Set in a newly revitalised Uptown Dubai, Mercer House celebrates a refreshed energy whereby lives and lifestyles are enhanced through creativity, design, wellness, and entertainment.

At the heart of Uptown, the property represents a place of belonging for everyone, where the boundaries between shared and resident-exclusive experiences begin to overlap. Built in conjunction with its vibrant surroundings, Mercer House exemplifies a vision of active urban living, raising the benchmark for designer developments across Dubai in the process.





HOME TO A NEW ICON



In addition to a collection of contemporary apartments, Mercer House offers access to a design icon with stunning architecture, world-class amenities, high-end shopping, and sociable dining.

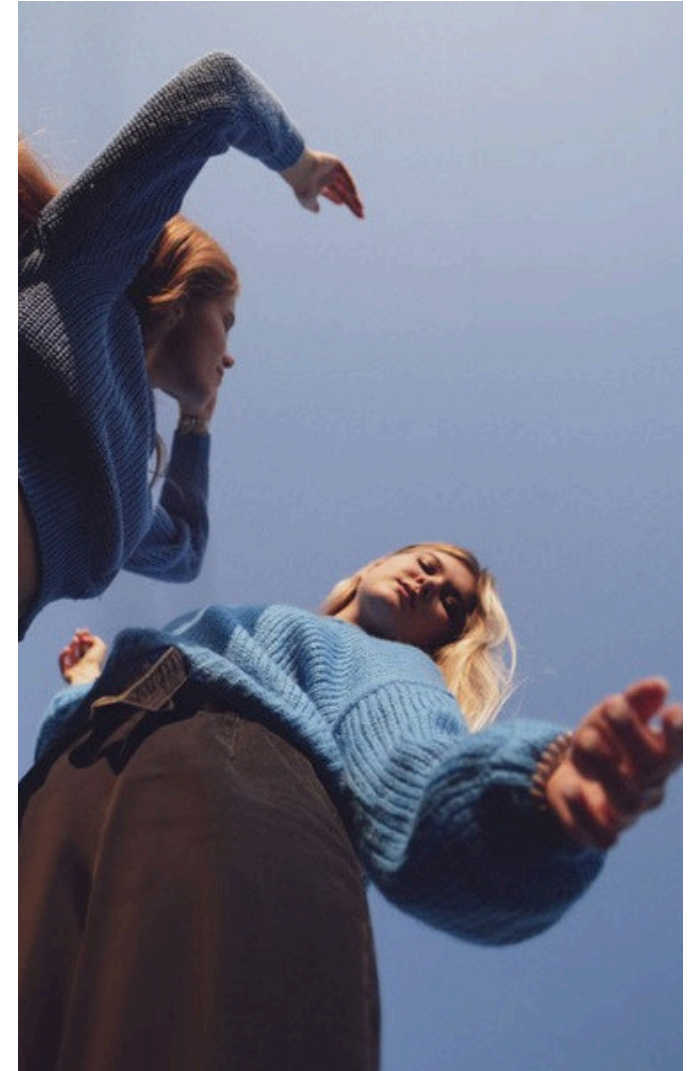
Mercer House is a lifestyle destination that is set for new experiences and perspectives in Uptown Dubai District. The theme of connection is present throughout, welcoming fresh thinking, self-expression, and discovery. Mercer House is your introduction to a plethora of entertainment, reserved for those who demand the best.

ENERGISED URBAN

LIVING



UPTOWN REVITALISED



Uptown Dubai is a beacon for new living and working. Framing the Dubai skyline, with two iconic towers, it is flanked by a series of premium commercial and residential buildings.

A place to see and be seen, Uptown Dubai is a district set to make a statement. A gateway to a new perspective from which to experience Dubai, set within a plaza that's thriving in attractions, venues, and installations. The spectrum of this unique location includes experiences through play, art, performance, and relaxation.

DRIVING

01 MINUTE Uptown Plaza	15 MINUTES Mall of the Emirates
05 MINUTES DMCC Metro Station	17 MINUTES Palm Jumeirah
06 MINUTES Marina Mall	18 MINUTES Burj Al Arab
08 MINUTES Montgomerie Golf Club	22 MINUTES Dubai Mall & Burj Khalifa
10 MINUTES Emirates Golf Club	25 MINUTES Dubai International Financial Ce nt re
11 MINUTES Jumeirah Islands Clubhouse	25 MINUTES Al Maktoum International Airport
12 MINUTES Ibn Battuta Mall	30 MINUTES Dubai International Airport

DISTANCES



UPTOWN DUBAI'S URBAN



PLAYGROUND



CREATING CONNECTION

The harmonious layers of Mercer House are inspired by the intricacies found in the natural world. These curved and linear forms help to soften the built environment, connecting contemporary architecture to the organic environment.

The two vast towers are alive with energy and modernity. They are designed to make residents feel more in tune with their surroundings while creating a soothing balance between outside and in.

WELCOMING REFRACTIONS

Emanating the constant motion of its location, Mercer House invites you into a state of seamless flow. The facade design elements are inspired by nature, taking on the undulating qualities of water.

Soft curved lines, organic shapes, and reflective surfaces take control of natural light, to illuminate rooms, soften corners and instil a sense of belonging. Angled mirrors create illusions of dreamlike spaces, while metallic accents recreate the effects of sunlight over pristine oceans.



WELCOME



TO THE PLAZA

The arrival area at Mercer House welcomes you with three convenient drop-off zones and experiential escalators, seamlessly transporting you from the Ground Floor to the chic retail haven on the Podium.



CONVENIENCE INCLUDED



Throughout the expansive layers and levels of each of its towers, Mercer House offers a vast collection of amenities and facilities. Seamlessly adapted to the building's form, and with a focus on sports and wellness, glass boxes host shared hubs of activity and communal spaces.

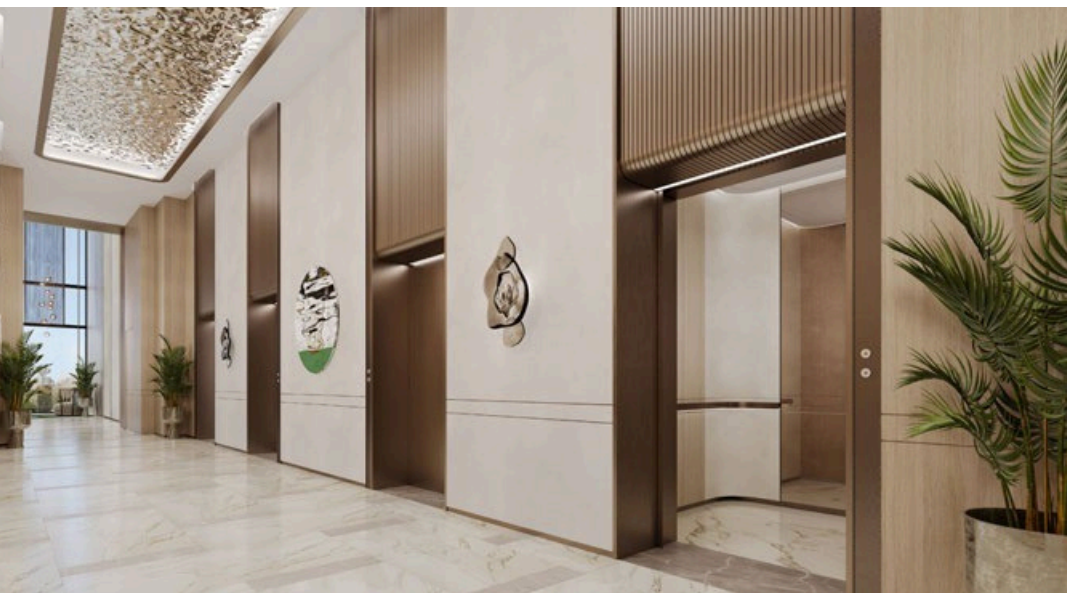
The ground floor offers a multitude of amenities and services that bring you everything you need, before you have to ask.

UPTOWN PLAZA VIEWS

From its vantage point, Mercer House podium offers mesmerizing views of the bustling core of Uptown Dubai. The podium provides a dynamic and multifaceted experience set against the vibrant backdrop of Uptown Plaza. While floor-to-ceiling windows in the residences allow residents to enjoy the energy and dynamism of Uptown Dubai from the comfort of their homes.







THE LOBBY

On the level of the lift lobby, you will be immersed in mirrored illusions, bright detailing, and expansive light. The space is adorned with selected artworks from Dubai's most up-and-coming talent, courtesy of the Ellington Art Foundation.

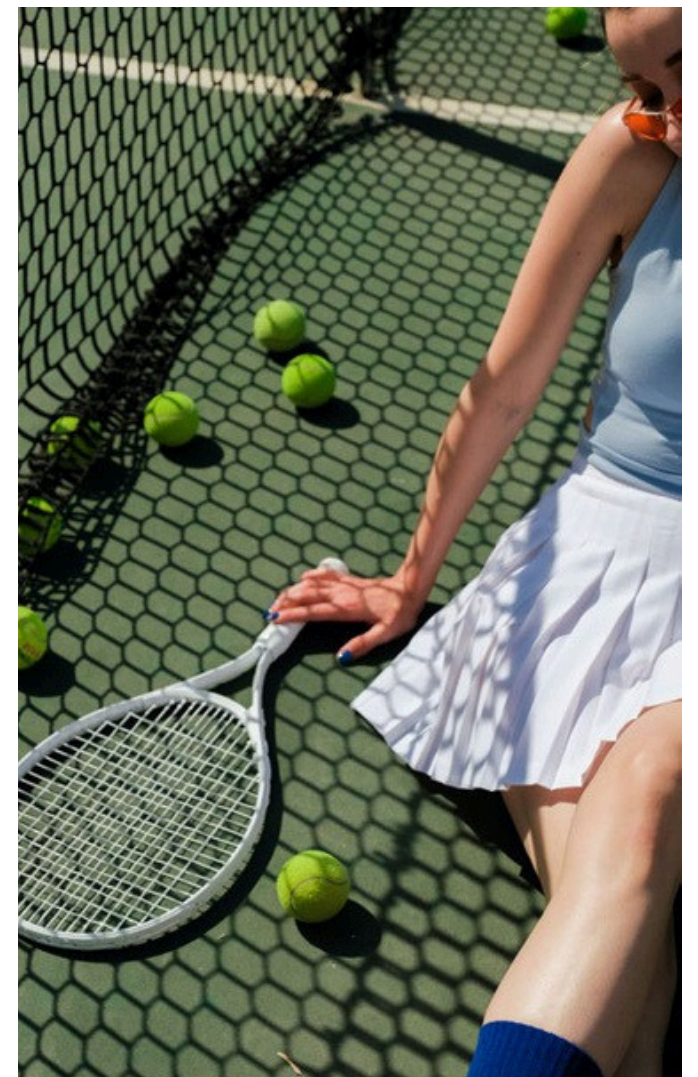
From the lift lobby, resident-only access guides you to your apartment or penthouse, the upper-floor amenities, and the urban beach club.







MULTI SPORTS HALL



Indulge in an array of athletic pursuits at Mercer House's multi-sports hall, boasting six exhilarating ball games. Residents can relish the thrill of a full-size tennis court, showcase their basketball prowess, immerse themselves in football excitement, partake in a spirited game of badminton, experience the fast-paced action of netball, and revel in the camaraderie of volleyball. Elevate your active lifestyle within this dynamic space, meticulously designed for residents to enjoy a diverse range of sporting activities.

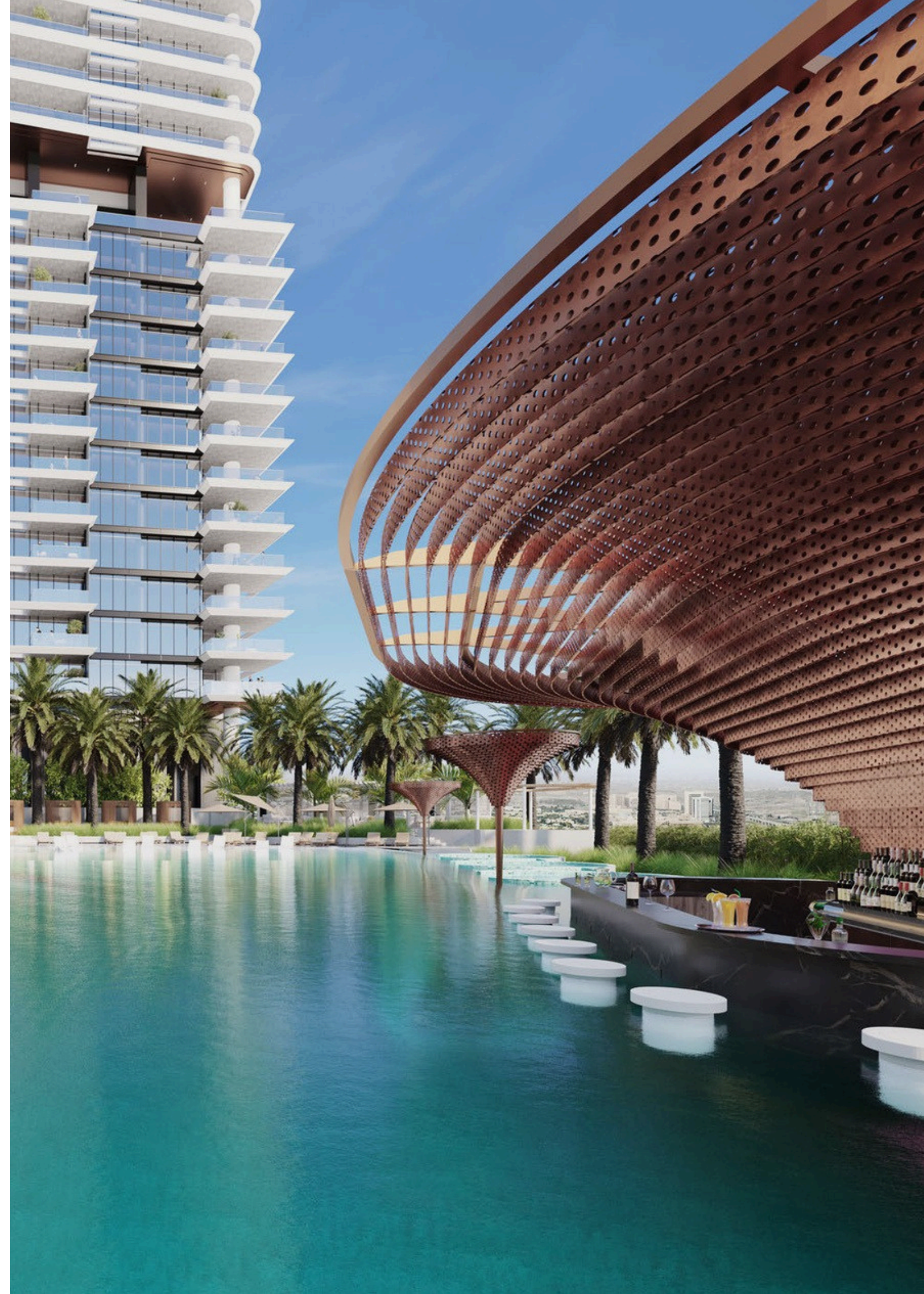




URBAN BEACH

The ideal place to cool down, unwind, and reconnect, the urban beach club is a social hotspot, in the direct vicinity of the area's top dining venues, and retail spaces. Vibrant ambient music brings new energy to the space, while the island podium creates unique Instagrammable moments to capture memories.

Watch the sunset across Uptown's skyline while enjoying a beachside setting. Moments from your home, the urban beach club is set to be one of Uptown's most coveted venues.







KIDS' PLAY AREA



Mercer House encourages imaginations of all ages to run wild. Soft play areas with professionally-approved toys and structures transport children to a sub-aquatic universe. Through soft toys, ball pits, tunnels, and portholes, they can discover the wonders of the deep while engaging their motor skills and embracing their creativity.





GAMES ROOM

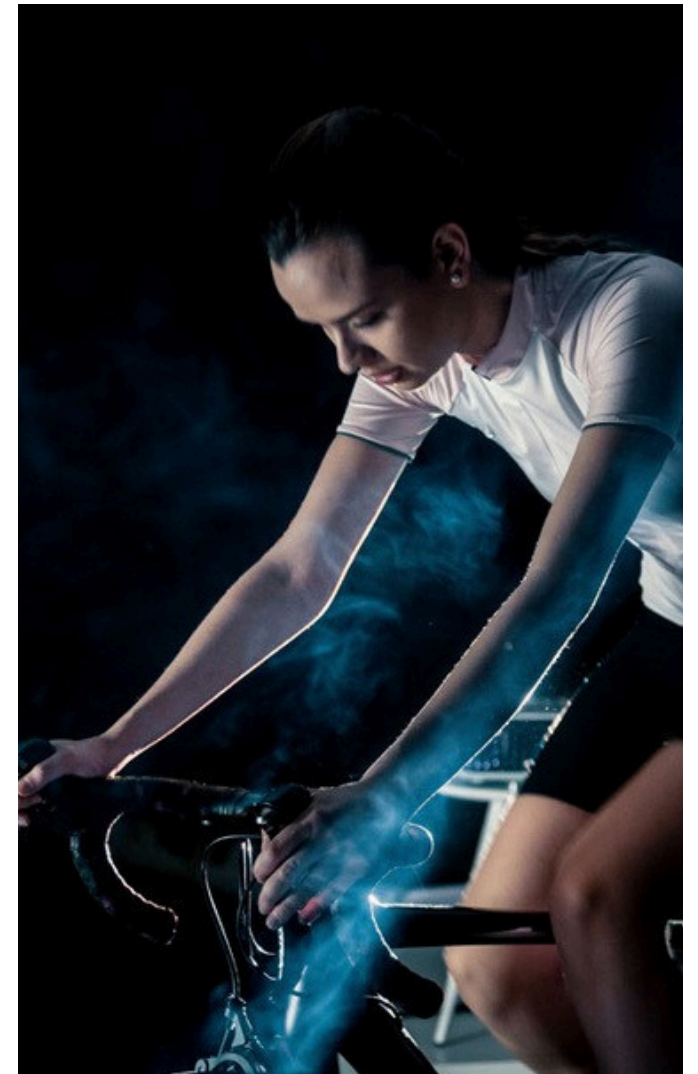
This futuristic space sits in the heart of Mercer House. It is an immersive showcase of cutting-edge digital entertainment, featuring an arcade zone, Dance Revo, and a karaoke room. With a cacophony of lights and colour, it attracts residents of all ages to hone their gaming skills or show off their musical talents.







FITNESS STUDIO



The fitness studio is equipped with weight-lifting, yoga equipment and high-end cardio, including a state-of-the-art pedal-powered light display system. After a revitalising workout, a soothing spa session, among natural finishes and ocean views awaits.



THE
TRACK
• KEEP FIT •

No. 25.061193, 55.139566
UNITED ARAB EMIRATES
DUBAI



SCENIC SAUNA

Wellbeing at Mercer House comes with a contemporary take on the traditional wood-panelled sauna. The feature is designed to enhance your experience with ambient sights and sounds that bring the viewer closer to the natural world.



ICE ROOM

To help your body re-energise after the heat of a sauna or the intensity of a workout, Mercer House invites you to complete your wellness experience in the Ice Room. A technological innovation of its kind, a ceiling-mounted 'ice fall' fills a basin to re-invigorate your strength with a blast of cold to boost your energy levels.







RESIDENTIAL CLUBHOUSE

The Clubhouses is design with sumptuous contemporary furniture, self-serve coffee bars, music, books, and games. The spaces extend outside to breathtaking views from a landscaped terrace, bringing elements of nature closer to home. By day, a sophisticated brunch spot, by night a collection of vibrant dining venues.





GROUND FLOOR AMENITIES PLAN

- 1 VEHICLE ENTRANCE
- 2 DROP-OFF AREA
- 3 LOBBY ENTRANCE
- 4 LOBBY RECEPTION
- 5 SERENITY LOUNGE

- 6 LOBBY WORKSTATION
- 7 RESIDENTS LIFTS LOBBY
- 8 RESIDENTS SERVICE LIFTS
- 9 RESIDENTS MOVE-IN TRUCK ZONE
- 10 VISITORS F&B/RETAIL LIFT

- 11 F&B/RETAIL SERVICE LIFTS
- 12 F&B SERVICE YARD/DELIVERIES
- 13 URBAN BEACH CLUB LIFT
- 14 ESCALATORS
- 15 WAITING AREA

- 16 VIP VALET PARKING
- 17 ENTRANCE WATER FEATURE
- 18 BASEMENT ENTRANCE/EXIT
- 19 PODIUM ENTRANCE/EXIT
- 20 BICYCLE PARKING

- 21 ACCESS TO UPTOWN PLAZA
- 22 SPORTS HALL LIFT
- 23 MALE CHANGE ROOM
- 24 FEMALE CHANGE ROOM
- 25 MULTI-SPORTS HALL

- MULTI-SPORTS HALL SECTION**
- FOOTBALL
 - NETBALL
 - BASKETBALL
 - TENNIS
 - VOLLEYBALL
 - BADMINTON



PODIUM 2 FLOOR AMENITIES PLAN

- | | | | |
|------------------------------|----------------------------|--------------------|---------------------------|
| 1 RESTAURANT OUTDOOR TERRACE | 3 VISITOR F&B/RETAIL LIFTS | 5 ESCALATORS | 7 RESIDENTS SERVICE LIFTS |
| 2 ACCESS TO F&B/RETAIL | 4 F&B/RETAIL SERVICE LIFTS | 6 SPORTS HALL LIFT | 8 RESIDENTS LIFTS LOBBY |



PODIUM 3 FLOOR AMENITIES PLAN

- | | | |
|-----------------|---------------------------|-------------------------|
| 1 PADEL COURTS | 3 SPORTS HALL LIFT | 5 RESIDENTS LIFTS LOBBY |
| 2 SQUASH COURTS | 4 RESIDENTS SERVICE LIFTS | |



PODIUM 4 FLOOR AMENITIES PLAN

- | | |
|-----------------------------|---------------------------|
| 1 VISITORS F&B/RETAIL LIFTS | 3 RESIDENTS SERVICE LIFTS |
| 2 F&B/RETAIL SERVICE LIFTS | 4 RESIDENTS LIFTS LOBBY |



URBAN BEACH CLUB

- 1 BEACH POOL
- 2 BUBBLE POOL
- 3 BEACH LOUNGERS AREA
- 4 SUN LOUNGERS AREA
- 5 BEACH CABANAS

- 6 POOL BAR
- 7 DJ BOOTH
- 8 ISLAND PODIUM
- 9 FIRE PIT
- 10 BEACH BAR

- 11 BEACH CLUB CHANGE ROOMS
- 12 BEACH CLUB LIFT
- 13 BEACH CLUB ARRIVAL AREA
- 14 CLUBHOUSE F&B
- 15 OUTDOOR DINING AREA

EXCLUSIVE RESIDENT AMENITIES

- 16 FAMILY POOL
- 17 POOL DECK
- 18 MALE/FEMALE CHANGE ROOMS
- 19 RESIDENTS LIFTS LOBBY
- 20 RESIDENTS SERVICE LIFTS

- 21 OUTDOOR SEATING
- 22 OUTDOOR BARBEQUE AREA
- 23 OUTDOOR DINING
- 24 OUTDOOR GAMES AREA
- 25 OUTDOOR KIDS PLAY AREA

- 26 KIDS WET PLAY AREA
- 27 INDOOR KIDS PLAY AREA
- 28 SING & DANCE REVOLUTION AREA
- 29 ARCADE ZONE
- 30 RESIDENTS CLUBHOUSE (SOUTH TOWER)

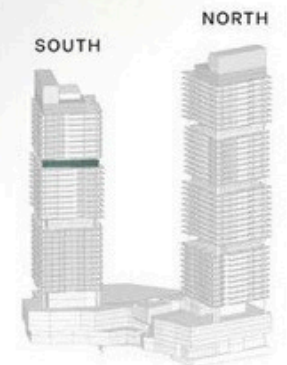


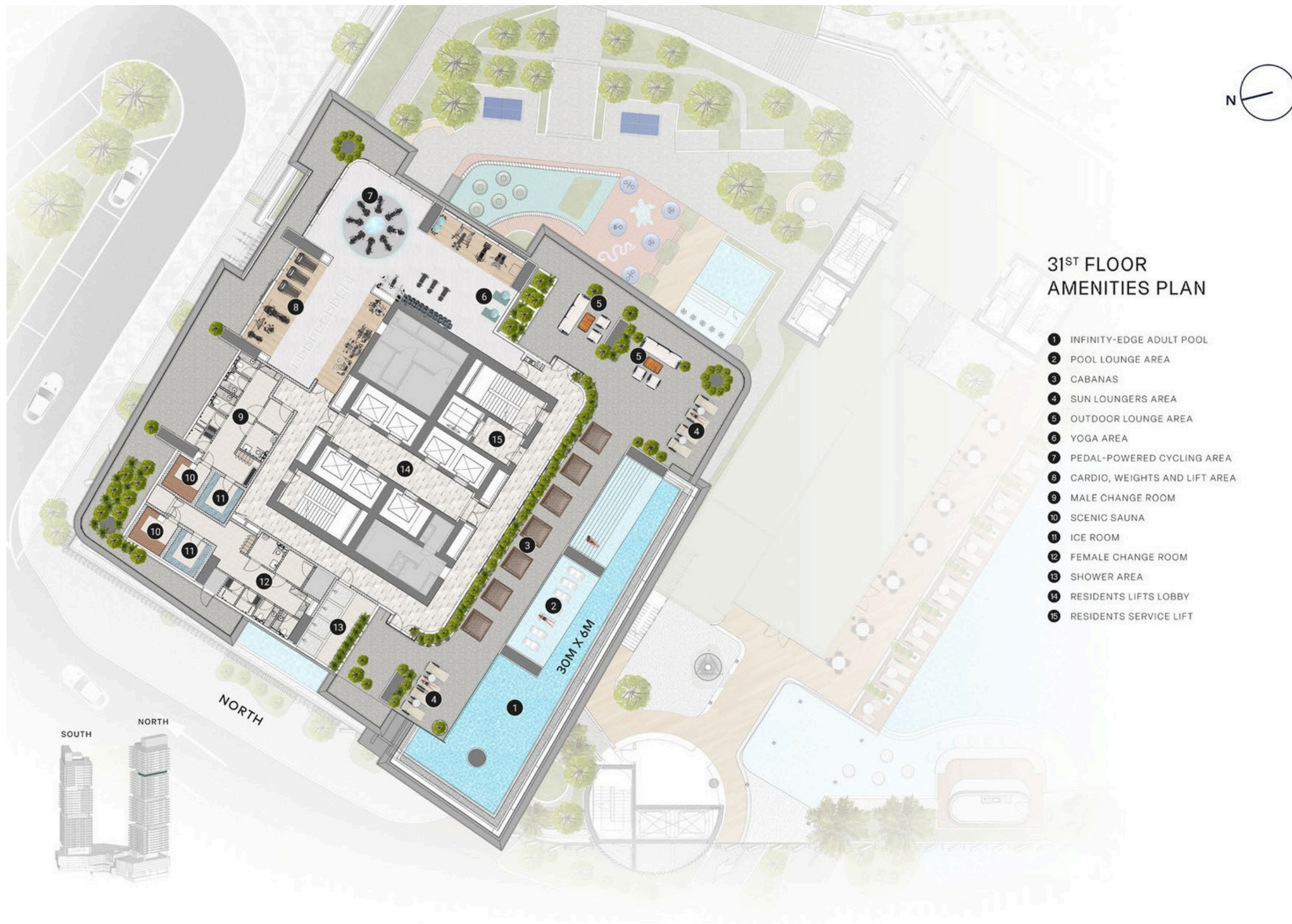
12TH FLOOR AMENITIES PLAN

- 1 PRIVATE DINING
- 2 INDOOR DINING
- 3 INDOOR LOUNGE
- 4 KITCHEN
- 5 PANTRY
- 6 MEETING AREA
- 7 OUTDOOR LOUNGE
- 8 OUTDOOR DINING
- 9 WASHROOM
- 10 RESIDENTS LIFTS LOBBY
- 11 RESIDENTS SERVICE LIFT
- 12 CLUB TERRACE

24TH FLOOR AMENITIES PLAN

- ① INFINITY-EDGE POOL
- ② POOL LOUNGE AREA
- ③ CABANAS
- ④ SUN LOUNGERS AREA
- ⑤ OUTDOOR LOUNGE AREA
- ⑥ YOGA AREA
- ⑦ PEDAL-POWERED CYCLING AREA
- ⑧ CARDIO, WEIGHTS AND LIFT AREA
- ⑨ MALE CHANGE ROOM
- ⑩ SCENIC SAUNA
- ⑪ ICE ROOM
- ⑫ FEMALE CHANGE ROOM
- ⑬ SHOWER AREA
- ⑭ RESIDENTS LIFTS LOBBY
- ⑮ RESIDENTS SERVICE LIFTS





31ST FLOOR AMENITIES PLAN

- 1 INFINITY-EDGE ADULT POOL
- 2 POOL LOUNGE AREA
- 3 CABANAS
- 4 SUN LOUNGERS AREA
- 5 OUTDOOR LOUNGE AREA
- 6 YOGA AREA
- 7 PEDAL-POWERED CYCLING AREA
- 8 CARDIO, WEIGHTS AND LIFT AREA
- 9 MALE CHANGE ROOM
- 10 SCENIC SAUNA
- 11 ICE ROOM
- 12 FEMALE CHANGE ROOM
- 13 SHOWER AREA
- 14 RESIDENTS LIFTS LOBBY
- 15 RESIDENTS SERVICE LIFT



RESIDENCES



RESIDENTIAL L PENTHOUSE S

Contemporary curves, modern accents, and soft detailing create a perfect balance with the textures, patterns, and furnishings inside.

The kitchens of Mercer House are equipped with high-end amenities, practical hidden storage, and thoughtful design touches. The kitchen island is chic, striking, ingenious, and functional, the counter features a pull-out accent table to add more versatility to the most sociable place in your home.





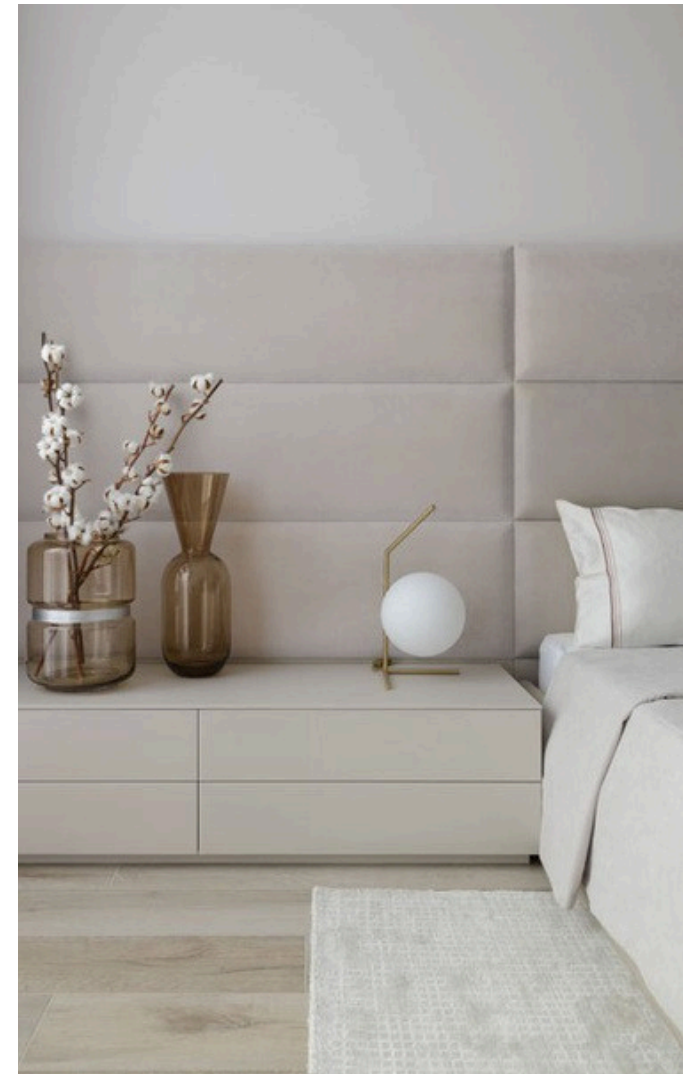
LIVING AND DINING



KITCHENS



CONTEMPORARY HOMES



Soft, intimate lighting and thoughtful design create an idyllic place to end and begin each day at Mercer House. Elegant accents and high-end features bring a contemporary charm to your daily cleansing rituals. In the master bathroom, an elegant shower takes centre stage, illuminated in natural light under the lofty ceilings.

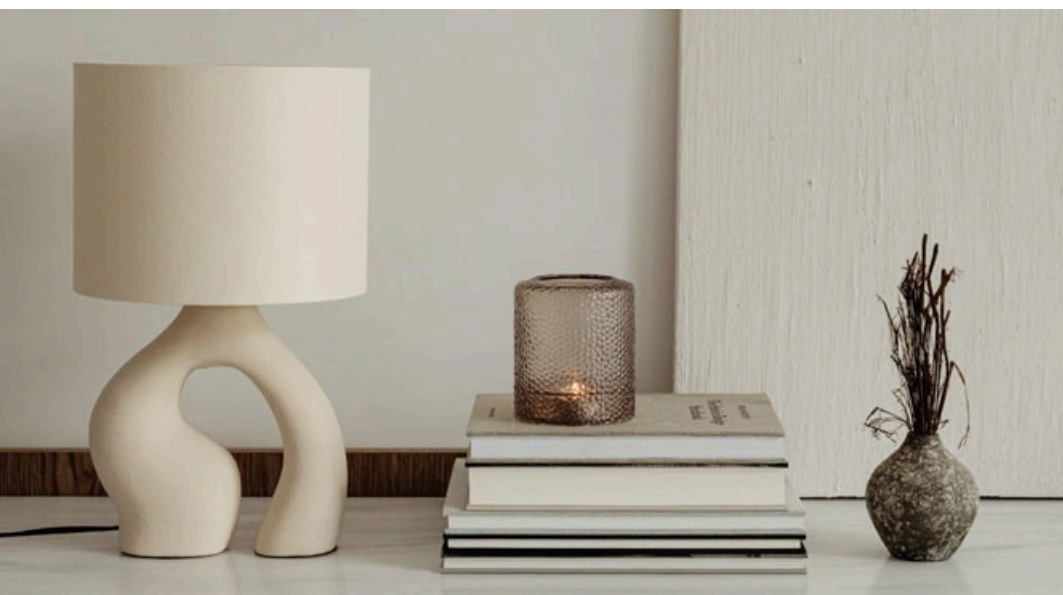
The shower area is concealed behind fluted glass, offering privacy with a touch of elegance.



BEDROOMS



BATHROOMS



RESIDENTIAL APARTMENTS

Your home at Mercer House is designed to welcome you into a place of sophisticated modern calm. Natural light flows in through floor-to-ceiling windows, accentuating the harmony between soft furnishings, natural curves and crisp detailing inspired by the building's facade.

Natural wood and stone finishes add a warm, homely feel to the modern functionality of Mercer House kitchens. As a place to cook, dine, share and socialise, space is maximised with slick storage solutions and high-end amenities.





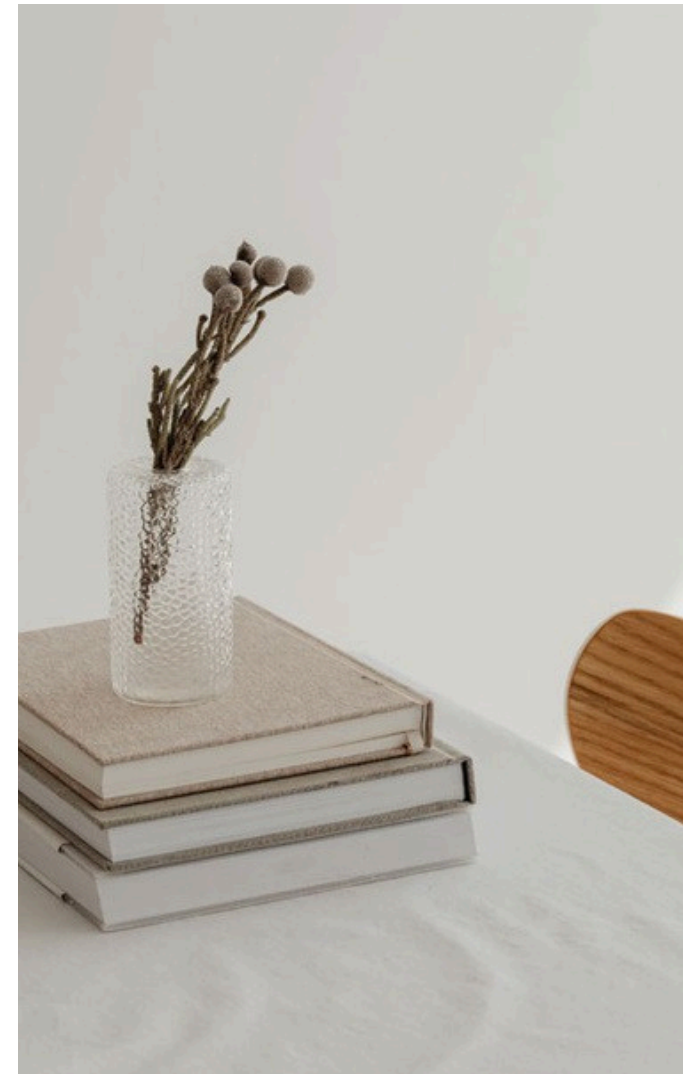
LIVING AND DINING



KITCHENS



SLEEK AND MODERN



Wake up to crisp sunlight and impressive views and fall asleep to the twinkling lights of Uptown's skyline from a place of serene comfort. Light natural tones and copper detailing bring a sense of intimacy, providing the key ingredients for a room to make your own.

A sophisticated configuration makes it easy to indulge in your self-care rituals and begin your day feeling refreshed and revitalised. Marble and natural wood imbue the healing properties of nature, while smart storage solutions and soft lighting add a sense of elegant minimalism to the space.



BEDROOMS

BATHROOMS





Founded in 2014, Ellington Properties is Dubai's leading design-led real estate developer and endeavours to craft beautiful Dubai properties and communities for high-quality lifestyles. Ellington homes are designed to inspire, with a vision to create living spaces that add value and contentment every day, supporting people as they journey towards their dreams and aspirations. Maintaining a focus on the aesthetic, the functionality and the convenience of the living space, our aim is to offer a beautiful backdrop for our residents' stories, developing spaces where they can grow, prosper and live life on their own terms.

CONTACT US



DUBAI HEAD OFFICE

Office 318, Business bay

Binary by Omniyat



+ 971 55 288 9160



info@crescoestate.com



www.crescoestate.com

„Your trusted partner in the world of real estate“

CRESCO